

PROMOTIONAL WATCHES

INTERMEDIA

SINCE 1991



TIME





SWISS MADE





# Reno

MECHANICAL



## Case

Stainless steel, polished and brushed finishing with turnable stainless steel top ring with aluminium insert

## Caseback

Screw type, stainless steel with glass window

## Glass

Mineral

## Crown

Stainless steel, pull/push

## Dial

Matt finishing with brushed applied indexes with luminous



Diameter 40,5 mm

Thickness 12,2 mm



## Movement

SELLITA SW200



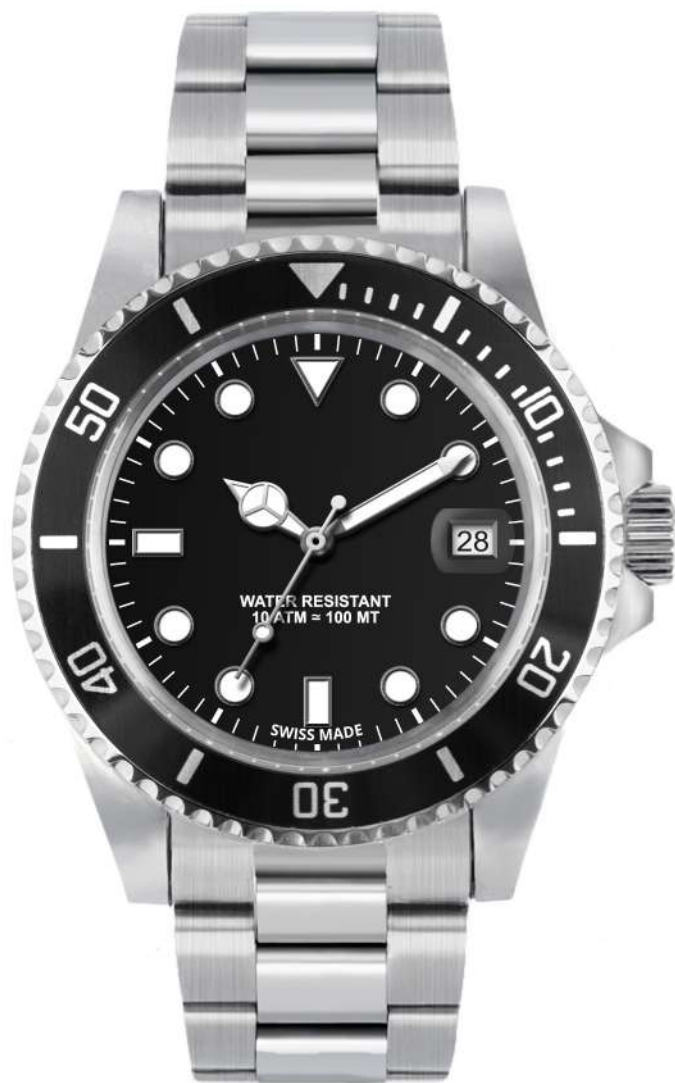
## Water Resistant

10 ATM



## Bracelet

Solid stainless steel with polished and brushed finishing, 20/18 mm



SC5726BKSBK



SC5726BKSBK



SC5726BKSRB







# Berna

MECHANICAL



## Case

Stainless steel,  
polished and brushed  
finishing

## Caseback

Screw type, stainless steel  
with glass window

## Glass

sapphire

## Crown

Stainless steel, pull/push

## Dial

With applied indexes



Diameter 39,5 mm

Thickness 11,5 mm



## Movement

SELLITA SW200



## Water Resistant

10 ATM



## Bracelet

Solid stainless steel with  
polished and brushed  
finishing, 20/18 mm

## Buckle

Stainless steel, deployante



SC5709BKS



SC5709SLS





#### Case

Stainless steel,  
polished finishing

#### Caseback

Stainless steel

#### Glass

Mineral domed

#### Crown

Stainless steel

#### Dial

Guilloché finishing  
with applied indexes



Diameter 42 mm

Thickness 12 mm



#### Movement

ETA 902.101



Water Resistant

5 ATM



#### Strap

Padded leather, 22/20 mm

#### Buckle

Stainless steel with tongue

# Locarno

Also available in "Lady" version, Ø 34 mm (see Rosa)

GENT QUARTZ



SC5671SLLBK



SC5672SLLBK





# Davos

GENT QUARTZ



## Case

Stainless steel,  
polished finishing

## Caseback

Screw type stainless steel

## Glass

Mineral

## Crown

Stainless steel

## Dial

With applied indexes



Diameter 43 mm

Thickness 13,5 mm



## Movement

Ronda 705



## Water Resistant

5 ATM



## Strap

Padded leather, 22/20 mm

## Buckle

Stainless steel with tongue



SC5601IVLDB







CRONOGRAPHS

# Bologna

ECO-FRIENDLY



## Case

Titanium

## Caseback

Titanium with glass

## Glass

Mineral

## Crown & Pushers

Titanium

## Dial

Two levels with applied indexes



**Diameter** 43 mm

**Thickness** 16 mm



## Movement

Epson VR42, Solar chrono

**Water Resistant**

5 ATM



## Bracelet

Titanium with Titanium  
deployante, 22/20 mm



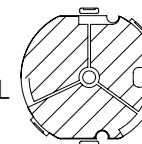
TH5706BLTISE



TH5706BKTISE



**ECO-FRIENDLY WATCH:**  
SOLAR PANEL IN THE DIAL



# Ancona

## CHRONOGRAPHS



### Case

Stainless steel,  
polished and brushed  
finishing, with turnable  
ring with aluminium insert

### Caseback

Screw type stainless steel

### Glass

Mineral

### Crown

Stainless steel

### Pushers

Stainless steel

### Dial

Guilloché finishing  
with applied counters



Diameter 43 mm

Thickness 14 mm



### Movement

Miyota 0S10



### Water Resistant

10 ATM



### Bracelet

Solid stainless steel with  
polished and brushed  
finishing, 22/20 mm

### Buckle

Stainless steel, deployante



SH9081BLS



# San Marco Chrono

CHRONOGRAPHS



## Case

Stainless steel,  
PVD Black matt finishing  
with turnable top ring

## Caseback

Screw type stainless steel

## Glass

Sapphire

## Crown

Screw type stainless steel,  
PVD Black matt finishing

## Pushers

Stainless steel,  
PVD Black matt finishing

## Dial

Matt finishing  
with super Luminova

## Hands

Super Luminova



Diameter 46,5 mm

Thickness 9,5 mm



## Movement

Miyota 0S20



Water Resistant

20 ATM



## Strap

Silicone rubber, 22/20 mm;  
leather, 22/20 mm

## Buckle

Stainless steel, PVD Black  
matt finishing with tongue



SH5017BKP



# Mantova



## Case

Stainless steel,  
polished finishing

## Caseback

Screw type, stainless steel

## Glass

Mineral domed

## Crown

Stainless steel

## Pushers

Stainless Steel

## Dial

Domed dial  
with applied indexes



Diameter 39 mm

Thickness 12,7 mm



## Movement

TMI VK64



Water Resistant

5 ATM



## Strap

Leather, 20 mm

## Buckle

Stainless steel, with tongue



SH5093BKLBK



SH5093SLLBK



SH5094IVLDB



## CHRONOGRAPHS

# Black Army Chrono

CHRONOGRAPHS



## Case

Stainless steel, IP black coating with satined finishing

## Caseback

Screw-type, stainless steel

## Glass

Mineral

## Crown

Stainless steel, IP black coating with satined finishing



Diameter 43 mm

Thickness 12 mm



## Movement

Miyota 2415



Water Resistant

5 ATM



## Strap

Rubber, 22/20 mm

## Buckle

Stainless steel with tongue, IP black coating with satined finishing



SH9583WHP



SH9583RDP



SH9583YEP



# Cobra



## Case

Stainless steel with polished and brushed finishing

## Caseback

Screw type stainless steel

## Glass

Mineral

## Crown

Stainless steel

## Dial

Inner ring, with applied indexes

## Pushers

Stainless steel



Diameter 43 mm

Thickness 12 mm



## Movement

Miyota JS25



Water Resistant

5 ATM



## Strap

Rubber, 22/20 mm

## Buckle

Stainless steel with tongue



9780SSCRBKSL



9780SSCRBKBK

CHRONOGRAPHS

# Rally chrono

CHRONOGRAPHS



## Case

Stainless steel, with brushed finishing

## Caseback

Screw type, stainless steel

## Glass

Mineral

## Crown

Stainless steel

## Pushers

Stainless steel



Diameter 46 mm

Thickness 13,5 mm



## Movement

Miyota JS50



Water Resistant

10 ATM



## Strap

Rubber, 22/20 mm

## Buckle

Stainless steel, deployante



SH9552SLP



# Sassari



## Case

Plastic soft touch  
with metal IPBlack toping  
and aluminium insert

## Caseback

Snap type stainless steel

## Glass

Mineral

## Crown

Stainless steel, IPBlack

## Pushers

Stainless steel



Diameter 43,5 mm

Thickness 12,5 mm



## Movement

TMI VD53



## Water Resistant

3 ATM



## Strap

Silicone rubber, 22/18 mm

## Buckle

Stainless steel with tongue



PH9067BKP01



PH9067WHP01



PLASTIC





CLASSIC WATCHES

# San Marco

GENT QUARTZ



## Case

Stainless steel,  
PVD Black matt finishing  
with turnable top ring  
with aluminium insert

## Caseback

Screw type, stainless steel

## Glass

Sapphire

## Crown

Screw type stainless steel,  
PVD Black matt finishing

## Dial

Matt finishing with Super  
Luminova

## Hands

Super Luminova



Diameter 46,5 mm

Thickness 9,5 mm



## Movement

Miyota 2315 with date



## Water Resistant

20 ATM



## Strap

Silicone rubber, 22/20 mm;  
leather, 22/20 mm

## Buckle

Stainless steel, PVD Black  
matt finishing with tongue



SH5016BKP



# Vasto

GENT QUARTZ



## Case

Stainless steel,  
polished finishing

## Caseback

Screw type, stainless steel

## Glass

Mineral

## Crown

Stainless steel



Diameter 42 mm

Thickness 12 mm



## Movement

TMI VD86



Water Resistant

5 ATM



## Strap

Padded leather with croco  
pattern 22/20 mm

## Buckle

Stainless steel with tongue



SH5722SLLBK





# Naxos

GENT QUARTZ



## Case

Stainless steel with polished and brushed finishing

## Caseback

Screw type, stainless steel

## Glass

Mineral

## Crown

Stainless steel

## Dial

Two levels with applied indexes



Diameter 40 mm

Thickness 8,5 mm



## Movement

Miyota 6P20



Water Resistant

5 ATM



## Strap

Padded leather with crocodile grain, 22/18 mm

## Buckle

Stainless steel with tongue



SH5680SLL



# Roger



## Case

Stainless steel

## Caseback

Screw type, stainless steel

## Glass

Mineral

## Crown

Stainless steel



Diameter 39,5 mm

Thickness 13,5 mm



## Movement

Miyota 2315



## Water Resistant

10 ATM



## Bracelet

Stainless steel, 20/18 mm

## Buckle

Deployante



SH9012WHS

GENT QUARTZ

# Haima



## Case

Stainless steel, brushed finishing

## Caseback

Screw type, stainless steel

## Glass

Mineral

## Crown

Stainless steel



Diameter 42,5 mm

Thickness 11,5 mm



## Movement

Miyota 2315



Water Resistant

5 ATM



## Strap

Silicone rubber, 22/20 mm;

## Buckle

Stainless steel, brushed finishing with tongue



SH9432BKL



SH9432BKL





# Garda

GENT QUARTZ



## Case

Stainless steel, polished and brushed finishing

## Caseback

Screw type stainless steel

## Glass

Mineral with lens

## Crown

Stainless steel

## Dial

Sunray finishing with applied indexes



Diameter 39,5 mm

Thickness 13,5 mm



## Movement

Miyota 2315



## Water Resistant

10 ATM



## Bracelet

Solid stainless steel, with polished and brushed finishing, 20/18 mm

## Buckle

Stainless steel, deployante



SH5022WHS

# Saturno

GENT QUARTZ



## Case

Stainless steel with polished finishing

## Caseback

Screw type, stainless steel

## Glass

Mineral

## Crown

Stainless steel

## Dial

With applied indexes



Diameter 39 mm

Thickness 7,5 mm



## Movement

Miyota GL15



## Water Resistant

3 ATM



## Strap

Milanese mesh band,  
24/22 mm

## Buckle

Stainless steel closing slide



SH9701BRS

# Marte



## Case

Stainless steel,  
IPBlack, matt finishing

## Caseback

Screw type, stainless steel,  
circular brushed

## Glass

Mineral

## Crown

Stainless steel,  
IPBlack finishing



Diameter 42,5 mm

Thickness 15,5 mm



## Movement

Miyota 2105



## Water Resistant

5 ATM



## Strap

Padded leather, 20/18 mm

## NATO strap

Nylon or leather with S/S  
buckle with tongue, 20 mm

## Buckle

Stainless steel, IPBlack,  
matt finishing with tongue



SH5650BKLBK



SH5650BKTBK





# Black Army

GENT QUARTZ



## Case

Stainless steel, IP black coating with satined finishing

## Caseback

Screw-type, stainless steel

## Glass

Mineral

## Crown

Stainless steel, IP black coating with satined finishing



Diameter 43 mm

Thickness 12 mm



## Movement

Miyota 2415



Water Resistant

5 ATM



## Strap

Rubber, 22/20 mm

## Buckle

Stainless steel with tongue, IP black coating with satined finishing



SH9582RD

# Eden



## Case

Natural wood

## Caseback

Natural wood with screws

## Glass

Mineral

## Crown

Stainless steel

## Dial

Natural wood with applied indexes



**Diameter** 40 mm

**Thickness** 11 mm



## Movement

Miyota 2035



## Strap

Apple skin, with S/S buckle with tongue, 18/16 mm

## Bracelet

Natural wood with S/S buckle with tongue, 18/18 mm



Maple wood



WH5665IVWIV



Sandal wood

WH5665BRWBR

ECO-FRIENDLY

# Greenwood

ECO-FRIENDLY



## Case

Natural wood

## Caseback

Natural wood and screw

## Glass

Mineral

## Crown

Stainless steel



Diameter 39,5 mm

Thickness 11,5 mm



## Movement

Miyota 2035



## Water Resistant

3 ATM



## Strap

Natural wood, 20/20 mm

## Buckle

Stainless steel



9801WE3WIVSL



9801WE3WDBSL





# Otello



## Case

Stainless steel with polished finishing

## Caseback

Screw type, stainless steel

## Glass

Mineral

## Crown

Stainless steel



Diameter 41 mm

Thickness 9,5 mm



## Movement

Miyota Super GM15



Water Resistant

5 ATM



## Strap

Leather, 20/18 mm

## Buckle

Stainless steel with tongue



SH9003WHL1

GENT QUARTZ

# Amerigo

GENT QUARTZ



**Case**  
Aluminium  
**Caseback**  
Snap type, stainless steel  
**Glass**  
Mineral  
**Crown**  
Stainless steel  
**Dial**  
With applied indexes



**Diameter** 40 mm  
**Thickness** 12,5 mm



**Movement**  
Miyota 2035



**Water Resistant**  
5 ATM



**Strap**  
Nylon 20 mm  
**Buckle**  
Stainless steel with tongue



AL9654BKT



AL9654BRT



AL9654BKTBK

# Linea

GENT QUARTZ



## Case

Stainless steel,  
polished finishing

## Caseback

Snap type stainless steel

## Glass

Mineral

## Crown

Stainless steel

## Dial

With applied indexes



Diameter 40 mm

Thickness 6,5 mm



## Movement

TMI VJ20



## Water Resistant

3 ATM



## Strap

Padded leather, with S/S  
buckle with tongue,  
20/18 mm

## Bracelet

Stainless steel,  
Milanese mesh band,  
coulisse closure, 20 mm

## NATO strap

Nylon or leather with S/S  
buckle with tongue, 20 mm



SH5070GDLBR



SH5071BKTBK



# Pesaro



**Case**  
metal IPS, polished  
finishing

**Caseback**  
Snap type, stainless steel

**Glass**  
Mineral

**Crown**  
Stainless steel



**Diameter** 40 mm  
**Thickness** 12,3 mm



**Movement**  
Miyota 2035



**Water Resistant**  
3 ATM



**Bracelet**  
Stainless steel, 20/18 mm  
with polished and brushed  
finishing

**Buckle**  
Stainless steel, deployante



AH5021BKS



AH5021WHS

GENT QUARTZ

# Sintesi

Also available in "Lady" version, Ø 36 mm (see Sintesi Lady)

GENT QUARTZ



## Case

Metal IPS,  
polished finishing

## Caseback

Snap type stainless steel

## Glass

Mineral

## Crown

Stainless steel

## Dial

With applied indexes



Diameter 40 mm

Thickness 7,4 mm



## Movement

TMI PC20



## Water Resistant

3 ATM



## Strap

Imitation leather,  
with S/S buckle with tongue,  
20/18 mm

## Bracelet

Stainless steel,  
Milanese meshband,  
coulisse closure, 20 mm



AH5068SLS



AH5068SLLBK



AH5068BKS



AH5068BKL BK

# Brezza

Also available in "Lady" version, Ø 36 mm (see Brezza Lady)

GENT QUARTZ



## Case

Metal IPS, with polished finishing

## Caseback

Snap type, stainless steel

## Glass

Mineral

## Crown

Steel

## Dial

With applied indexes



Diameter 40 mm

Thickness 7,9 mm



## Movement

TMI PC20



Water Resistant

3 ATM



## Strap

Nato, nylon, 20 mm

## Buckle

Stainless steel with tongue



AH5068BKTBK



AH5068BKTR



AH5068BKTIV



AH5068BKTOG



AH5068BKTOR



AH5068SLTBL



AH5068SLTBR



AH5068SLTOG



AH5068SLTRD



AH5068SLTITA







LADY WATCHES

# Sohar



## Case

Stainless steel, IPGold,  
polished finishing

## Caseback

Screw type stainless steel

## Glass

Mineral

## Crown

Stainless steel,  
IPGold

## Dial

Sunray silver colour



Diameter 36 mm

Thickness 9 mm



## Movement

Miyota 2035



Water Resistant

5 ATM



## Bracelet

Stainless steel, IPGold,  
deployante, 18/16 mm



SH0811GDS

LADY QUARTZ

# Carrara



## Case

Stainless steel with polished and brushed finishing

## Caseback

Screw type stainless steel

## Glass

Mineral

## Crown

Stainless steel with blue cabochon

## Dial

With applied indexes and 12 crystal stones



Diameter 39 mm

Thickness 9 mm



## Movement

Miyota 1L45



## Water Resistant

5 ATM



## Strap

Padded leather with croco pattern, 18/16 mm

## Buckle

Stainless steel with tongue



SH0758BKLBK

LADY QUARTZ

# Iris



## Case

Stainless steel, IPGold or  
IPRose, polished finishing

## Caseback

Screw type stainless steel

## Glass

Mineral

## Crown

Stainless steel,  
IPGold or IPRose

## Dial

Two levels  
with applied indexes



Diameter 37 mm

Thickness 10 mm



## Movement

TMI VH61



Water Resistant

5 ATM



## Strap

Italian leather, with S/S  
buckle with tongue,  
18/16 mm

## Bracelet

Stainless steel, mesh band,  
IPGold or IPRose, coulisse  
closure, 18/16 mm



## LADY QUARTZ



SH0788SLS



SX0785SLLBK



SX0786SLLFX



# Volterra 36

LADY QUARTZ



## Case

Stainless steel,  
IP Rose Gold,  
with polished finishing

## Caseback

Snap type stainless steel

## Glass

Mineral

## Crown

Stainless steel

## Dial

With applied indexes



Diameter 36 mm

Thickness 5,5 mm



## Movement

Miyota GL20



Water Resistant

3 ATM



## Strap

Padded leather with S/S  
buckle with tongue,  
18/16 mm

## NATO strap

Nylon, with S/S buckle  
with tongue, 18 mm

## Bracelet

Stainless steel,  
Milanese mesh band,  
coulisse closure, 18 mm



SH0730SLLBK



SH0730WHLBR



SH0729WHTBLWH



SH0729WHTBLVL



SH0729WHTBLRD



SH0729WHTCERD



SH0729WHTCEWH



SH0729SLS



SH0755SLS



SH0732WHLBR



SH0731WHTGERD



SH0731WHTBLRS



SH0731WHTCERS



SH0807SLS



SH07545SLLWH



# Vicky



## Case

Stainless steel

## Caseback

Screw type stainless steel

## Glass

Mineral

## Crown

Stainless steel



Diameter 32 mm

Thickness 9,5 mm



## Movement

Miyota GM10



## Water Resistant

3 ATM



## Bracelet

Leather, 16/14 mm

## Buckle

Stainless steel



SH0516WHLBK



SH0516WHLRD

LADY QUARTZ

# Siena



## Case

Stainless steel with  
brushed and brushed  
finishing

## Caseback

Screw-type, stainless steel

## Glass

Mineral with lens

## Crown

Stainless steel



Diameter 36 mm

Thickness 10,5 mm



## Movement

Miyota 2315



Water Resistant  
5 ATM



## Strap

Stainless steel, 18/16 mm,  
with polished and brushed  
finishing

## Buckle

Stainless steel, deployante



SH0707WHS





# Parigi



## Case

Metal IPS, polished finishing with crystals

## Caseback

Stainless steel

## Glass

Mineral

## Crown

Stainless steel

## Dial

Two levels with guilloché finishing



Diameter 38 mm

Thickness 9 mm



## Movement

Miyota 2039



Water Resistant

5 ATM



## Strap

Eco leather, 20/16 mm

## Buckle

Stainless steel with tongue



AH0727SLLBK



AH0727SLLFX





# Brezza Lady

Also available in "Gent" version, Ø 40 mm (see Brezza)

LADY QUARTZ



## Case

Metal, IPS, polished finishing

## Caseback

Snap type, stainless steel

## Glass

Mineral

## Crown

Stainless steel

## Dial

With applied indexes



Diameter 36 mm

Thickness 7,9 mm



## Movement

TMI PC20



Water Resistant

3 ATM



## Strap

Nato, nylon, 18 mm

## Buckle

Stainless steel with tongue



AH5068BKTBK



AH5068BKTBLWH



AH0796BKTGERD



AH0796SLTLRD

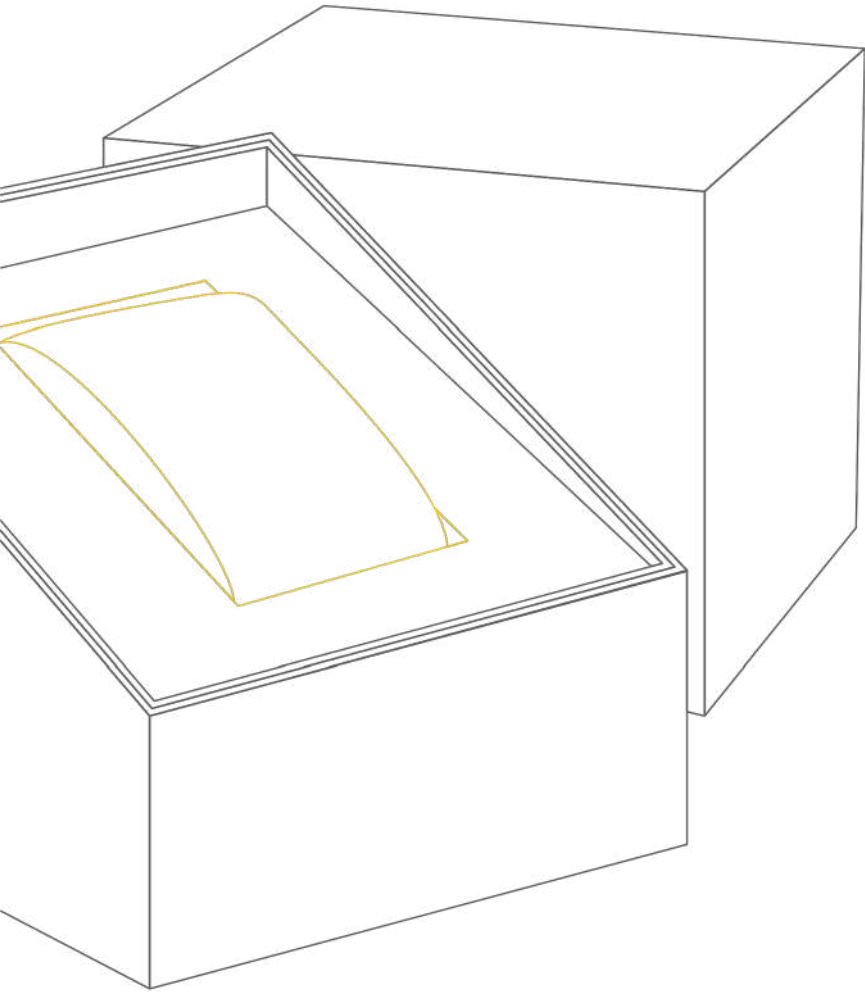


AH0796SLTLWH



AH0796SLTGERD



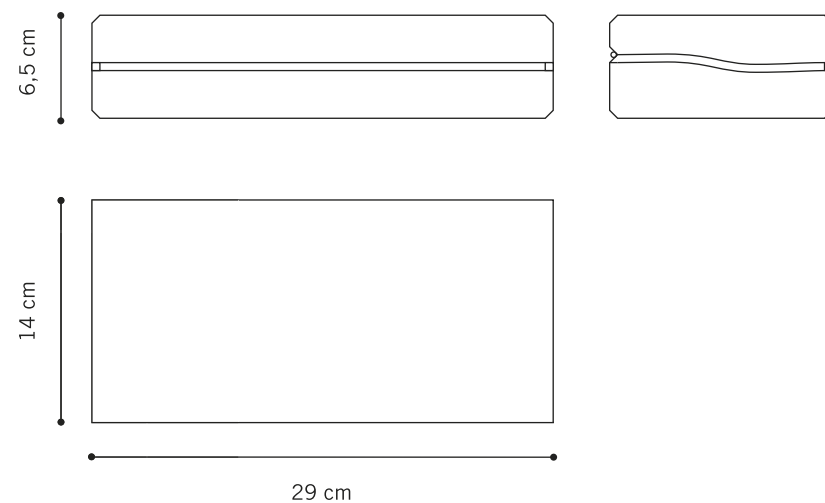


PACKAGING

# Prince PBL02LE

ASTUCCI - ESPOSITORI  
PACKAGING - DISPLAY

**Colore:** nero - **Materiale:** legno  
*Color: black - Material: wood*

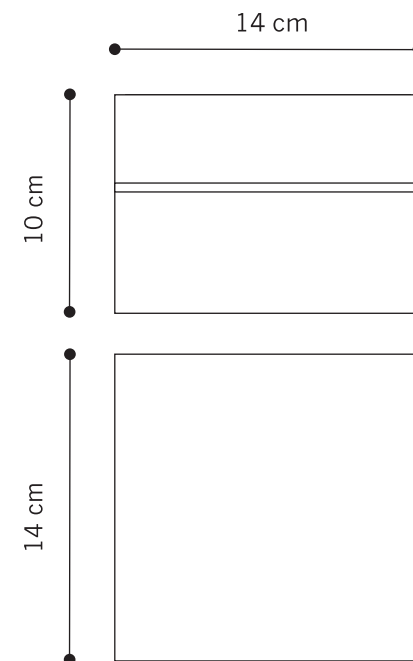


PBL02LE

## Lusso

**Dimensioni:** 140 x 140 mm; H 100 mm - **Materiale:** Legno

**Dimension:** 140 x 140 mm; H 100 mm - **Material:** Wood



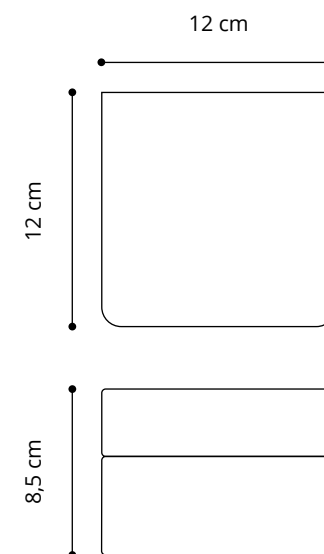
PBL02LM



## Scrigno AQ08 white | AQ08B black

**Dimensioni:** 120mm x 120mm; H85mm - **Materiale:** PU

**Dimension:** 120mm x 120mm; H85mm - **Material:** PU



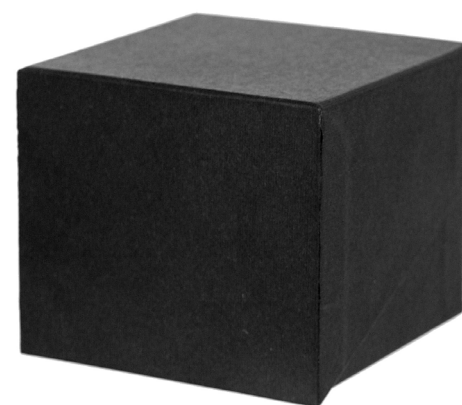
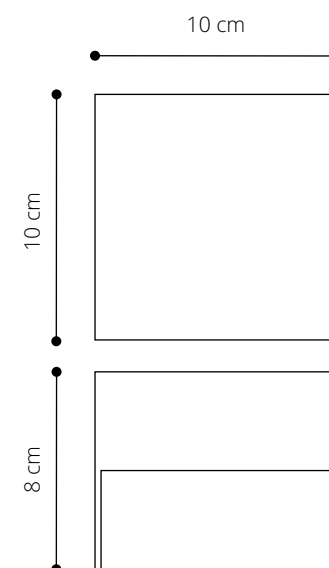
# Origami

**Dimensioni:** 100mm x 100mm; H80mm - **Materiale:** Cartoncino

**Dimension:** 100mm x 100mm; H80mm - **Material:** Paper



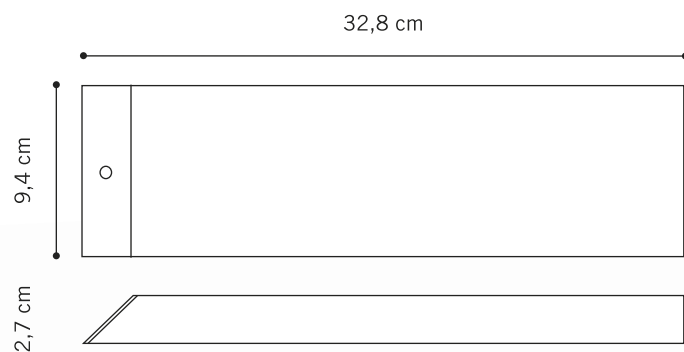
PBC02LM



# Set

ASTUCCI - ESPOSITORI  
PACKAGING - DISPLAY

**Colore:** nero - **Materiale:** cartoncino  
*Color: black - Material: paper*



SET



Orologio + secondo cinturino  
*Watch + second strap*

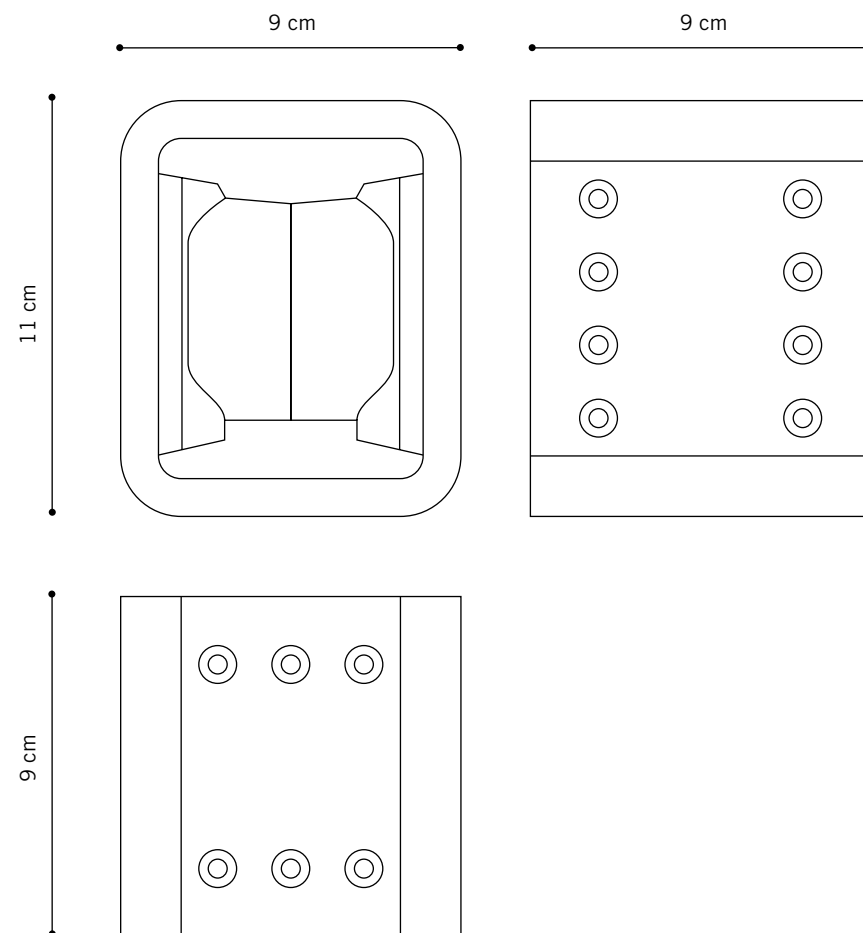


Coppia di orologi  
*Pair watches*

# Frame

ASTUCCI - ESPOSITORI  
PACKAGING - DISPLAY

**Colore:** trasparente e nero lucido - **Materiale:** plastica  
*Color: transparent and shiny black - Material: plastic*



FRAME



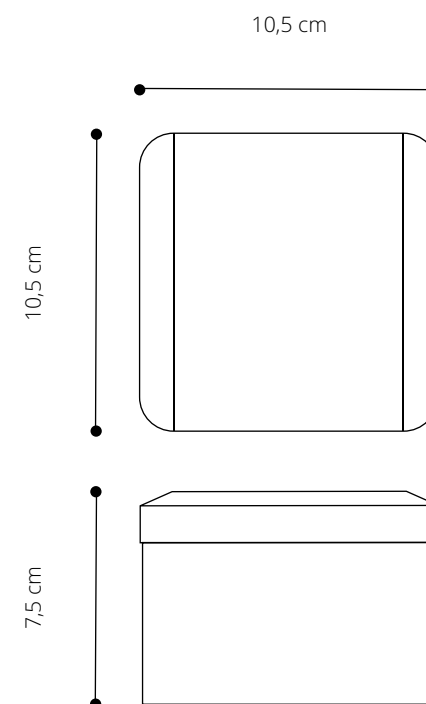
# Cubica

**Dimensioni:** 105 x 105 mm; H 67 mm - **Materiale:** Metallo

**Dimension:** 105 x 105 mm; H 67 mm - **Material:** Metal



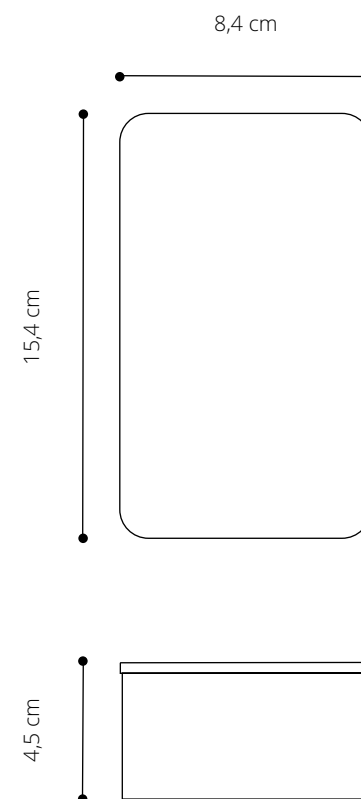
BLA07



## Sliding

**Dimensioni:** 154 mm x 84 mm; H 45 mm - **Materiale:** Metallo

*Dimension:* 154 mm x 84 mm; H 45 mm - *Material:* Metal



PBM08SM

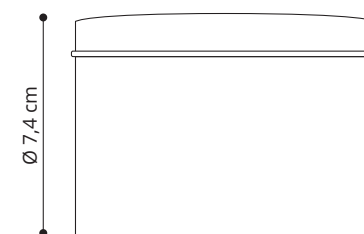
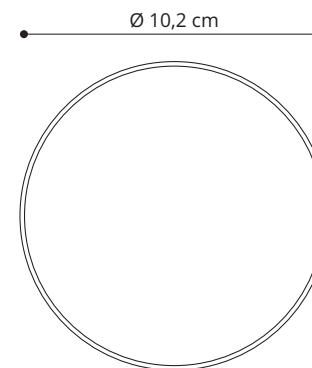
## Cilindrica

**Dimensioni:** 102 x 102 mm; H 74 mm - **Materiale:** Metallo

**Dimension:** 102 x 102 mm; H 74 mm - **Material:** Metal



BLA08





**Dimensioni:** 90mm x 90mm; H93mm - **Materiale:** cartone  
*Dimension: 90mm x 90mm; H93mm - **Material:** cardboard*



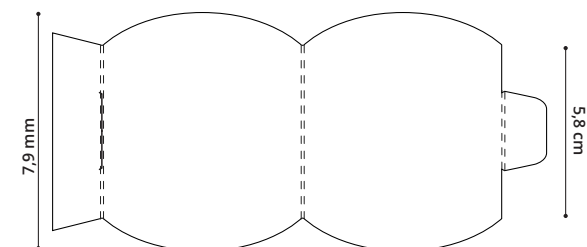
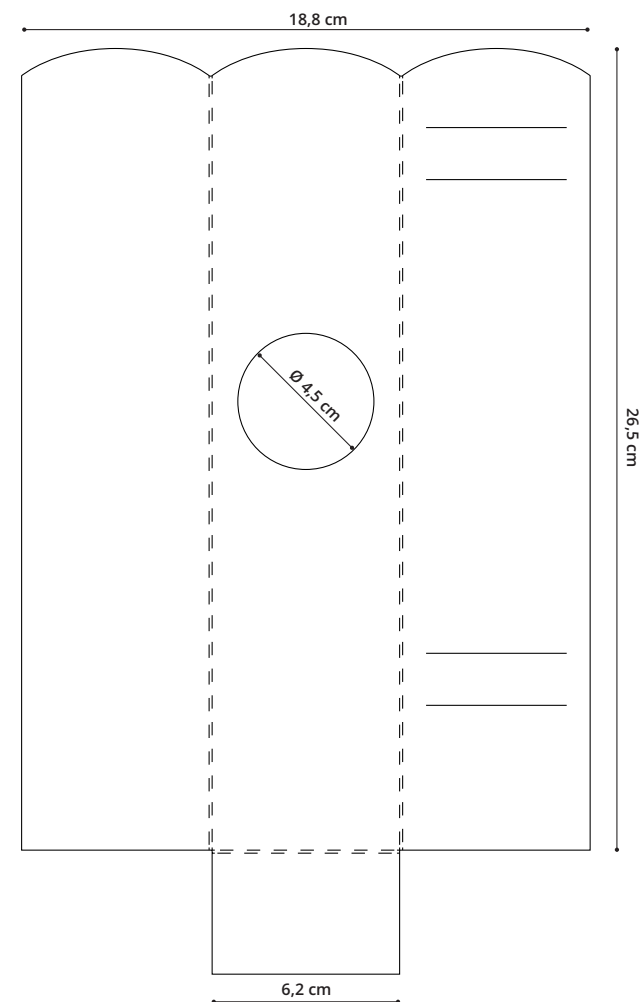
# Leporello

Colore: grigio - Materiale: Cartoncino

Color:: grey - Material: Paper



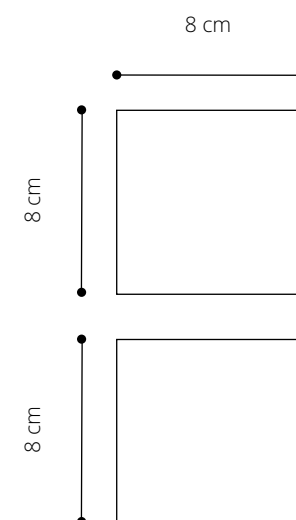
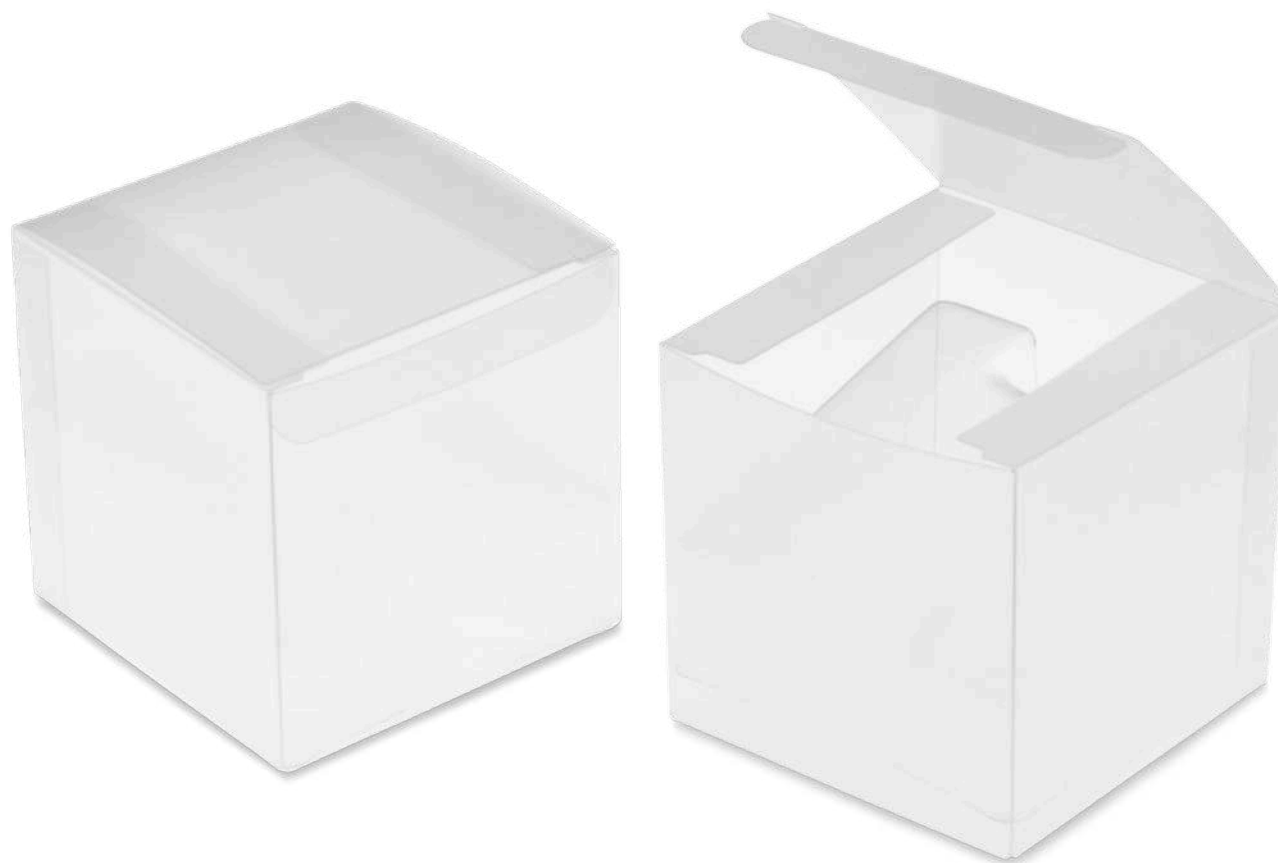
LEPORELLO



# Ghost

**Dimensioni:** 80mm x 80mm; H80mm - **Materiale:** Plastica trasparente

**Dimension:** 80mm x 80mm; H80mm - **Material:** Transparent plastic



BP08



INTERMEDIA

SINCE 1991



TIME